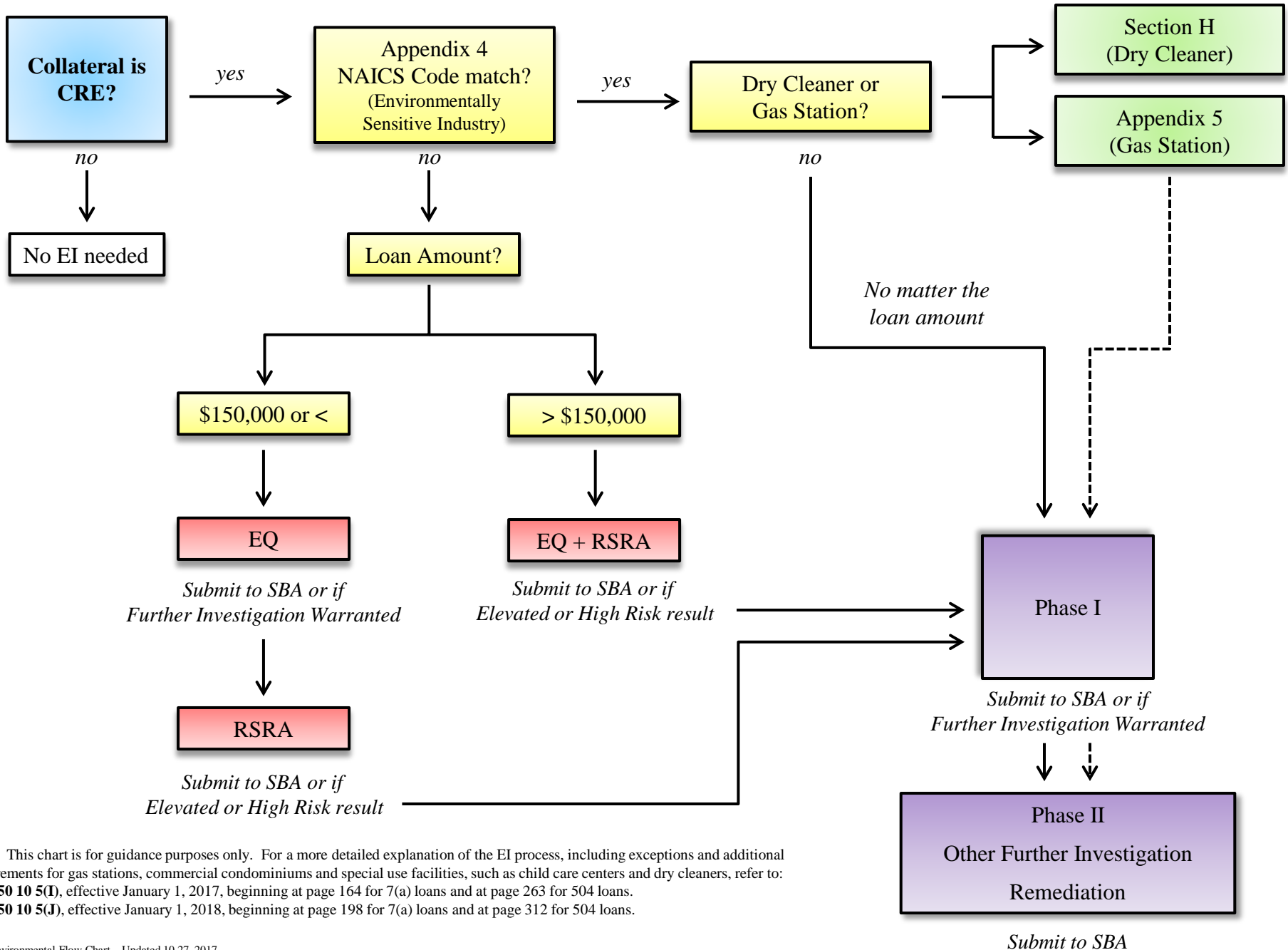


# SBA Environmental Flow Chart



**Note:** This chart is for guidance purposes only. For a more detailed explanation of the EI process, including exceptions and additional requirements for gas stations, commercial condominiums and special use facilities, such as child care centers and dry cleaners, refer to: **SOP 50 10 5(I)**, effective January 1, 2017, beginning at page 164 for 7(a) loans and at page 263 for 504 loans. **SOP 50 10 5(J)**, effective January 1, 2018, beginning at page 198 for 7(a) loans and at page 312 for 504 loans.

**APPENDIX 4: NAICS CODES OF ENVIRONMENTALLY SENSITIVE INDUSTRIES****NAICS CODES OF ENVIRONMENTALLY SENSITIVE INDUSTRIES\*****How to determine if an industry is included on this list:**

- A 3 digit NAICS code includes all industries beginning with those 3 digits.
- A 4 digit NAICS code includes all industries beginning with those 4 digits.
- A 5 digit NAICS code includes all industries beginning with those 5 digits.
- A 6 digit NAICS code includes only that industry under that industrial code.

- 211 OIL & GAS EXTRACTION
- 212 MINING (EXCEPT OIL & GAS)
- 213 SUPPORT ACTIVITIES FOR MINING
- 237 HEAVY & CIVIL ENGINEERING CONSTRUCTION
- 311 FOOD MANUFACTURING (*if underground fuel tanks present*)
- 312 BEVERAGE & TOBACCO PRODUCT MANUFACTURING
- 313 TEXTILE MILLS (*not required if sewing, weaving, or hemming only*)
- 314 TEXTILE PRODUCT MILLS (*not required if sewing, weaving, or hemming only*)
- 316 LEATHER & ALLIED PRODUCT MANUFACTURING (*not required if assembly only*)
- 321 WOOD PRODUCT MANUFACTURING (*if finishing occurs on site*)
- 322 PAPER MANUFACTURING
- 323 PRINTING & RELATED SUPPORT ACTIVITIES
- 324 PETROLEUM & COAL PRODUCTS MANUFACTURING
- 325 CHEMICAL MANUFACTURING
- 326 PLASTICS & RUBBER PRODUCTS MANUFACTURING (*not required if assembly only*)
- 327 NONMETALLIC MINERAL PRODUCTS MANUFACTURING
- 331 PRIMARY METAL MANUFACTURING
- 332 FABRICATED METAL PRODUCT MANUFACTURING (*not required if assembly only*)
- 333 MACHINERY MANUFACTURING (*not required if assembly only*)
- 334 COMPUTER & ELECTRONIC PRODUCT MANUFACTURING (*not required if assembly only*)
- 335 ELECTRICAL EQUIPMENT, APPLIANCE & COMPONENT MANUFACTURING (*not required if assembly only*)
- 336 TRANSPORTATION EQUIPMENT MANUFACTURING
- 337 FURNITURE & RELATED MANUFACTURING (*if finishing occurs on site*)
- 339 MISCELLANEOUS MANUFACTURING (*only required if hazardous materials are involved*)
- 42311 AUTOMOBILE & OTHER MOTOR VEHICLE MERCHANT WHOLESALERS (*if service bays present*)
- 42314 MOTOR VEHICLE PARTS (USED) MERCHANT WHOLESALERS
- 4235 METAL & MINERAL MERCHANT WHOLESALER
- 42393 RECYCLABLE MATERIAL MERCHANT WHOLESALER
- 4246 CHEMICAL & ALLIED PRODUCTS MERCHANT WHOLESALERS
- 4247 PETROLEUM & PETROLEUM PRODUCTS MERCHANT WHOLESALERS
- 441 MOTOR VEHICLE AND PARTS DEALERS (*if service bays present*)
- 447 GASOLINE STATIONS
- 45431 FUEL DEALERS (*not required for propane or firewood dealers*)

481 AIR TRANSPORTATION  
 482 RAIL TRANSPORTATION  
 484 TRUCKING *(if service bays, truck washing, or fuel tanks present)*  
 486 PIPELINE TRANSPORTATION  
 53212 TRUCK, UTILITY TRAILER, AND RV (RECREATIONAL VEHICLE) RENTAL & LEASING *(if repairs, maintenance or vehicle washing are performed onsite)*  
 53241 CONSTRUCTION, TRANSPORTATION, MINING & FORESTRY MACHINERY & EQUIPMENT RENTAL & LEASING *(if repairs, maintenance or vehicle washing are performed onsite)*  
 53249 OTHER COMMERCIAL & INDUSTRIAL MACHINERY & EQUIPMENT RENTAL & LEASING *(if repairs, maintenance or vehicle washing are performed onsite)*  
 54138 TESTING LABORATORIES  
 56171 EXTERMINATING & PEST CONTROL SERVICES  
 562 WASTE MANAGEMENT & REMEDIATION SERVICES  
 6221 GENERAL MEDICAL & SURGICAL HOSPITALS *(if fuel tanks are present)*  
 713990 OTHER RECREATIONAL INDUSTRIES *(indoor and outdoor shooting ranges only)*  
 71391 GOLF COURSES & COUNTRY CLUBS  
 71392 SKIING FACILITIES  
 71393 MARINAS  
 7212 RV (RECREATIONAL VEHICLES) PARKS & RECREATIONAL CAMPS *(if fuel tanks are present or if vehicle repairs or maintenance is performed onsite)*  
 8111 AUTOMOTIVE REPAIR & MAINTENANCE *(except for "car wash only" facilities, for which a Transaction Screen is an acceptable starting point)*  
 8112 ELECTRONIC & PRECISION EQUIPMENT REPAIR & MAINTENANCE *(not required if assembly only)*  
 8113 COMMERCIAL & INDUSTRIAL MACHINERY & EQUIPMENT REPAIR & MAINTENANCE  
 8122 DEATH CARE SERVICES *(unless no embalming or cremation at the Property)*  
 8123 LAUNDRY & DRY CLEANING SERVICES *(if dry cleaning operations have ever existed on site)*  
 812921 PHOTOFINISHING LABORATORIES *(except one hour)*

\*A Phase I should always be obtained if the business sells, supplies or dispenses fuel, gasoline, heating oil, even if the NAICS code for the business is not identified on this list of environmentally sensitive industries.

A complete list of industries and corresponding NAICS codes is available online at <http://www.census.gov/eos/www/naics/>.